

Welcome to

# SWYANISH SOLUTIONS PRIVATE LIMITED

**Building Legacies with Uncompromised Quality**





A construction site at sunset. In the foreground, two construction workers wearing hard hats and safety vests are looking at a set of plans. One worker is pointing towards a large building under construction in the background. A tall crane is positioned behind the building. The sky is filled with soft, orange and yellow clouds from the setting sun. An excavator is visible in the distance on the right.

# SWYANISH SOLUTIONS PRIVATE LIMITED

---

“One platform. Complete construction.”



# About Us – SWYANISH SOLUTIONS PRIVATE LIMITED

## What We Are

- Swyanish Solutions Private Limited is a Madhya Pradesh-based construction company executing government and private building projects with a strong focus on quality and compliance.

## What We Are Doing

- **We deliver end-to-end civil construction services including Survey, Design, Drawing, RCC works, masonry, finishing, and site execution for residential, commercial, institutional projects, Consultancy and role of independent engineer.**

## Vision

“To develop a unified mobile application for government and non-government construction projects that offers A-to-Z construction management features.”

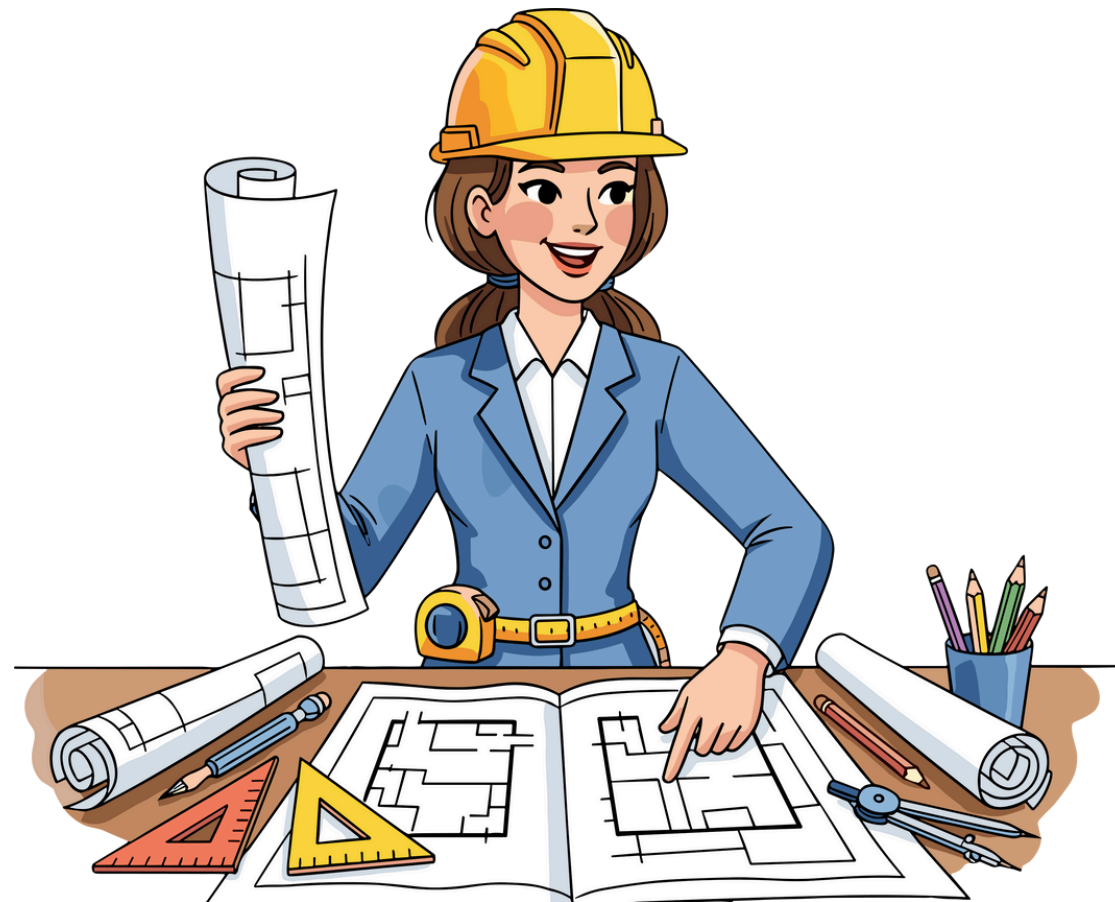
## Mission

“To execute every project with uncompromised quality, transparency, and timely completion while creating long-term value for clients and communities.”

# Non-Government Projects Execution Model & Impact

## End-to-End Project Execution

- Detailed site survey, contouring, layout planning, design, and drawings before project start
- Rate finalisation as per standard BOQ with approved suppliers and certified material brands
- Engineer, supervisor, and contractor finalisation before construction commencement
- Construction execution with clearly defined scope and timelines



## Digital Monitoring & Transparency

- Phase-wise project monitoring through mobile app
- All meetings, decisions, drawings, measurements, and approvals recorded digitally
- Zero scope for cheating or fraud through complete documentation
- 100% transparency for client, engineer, and contractor



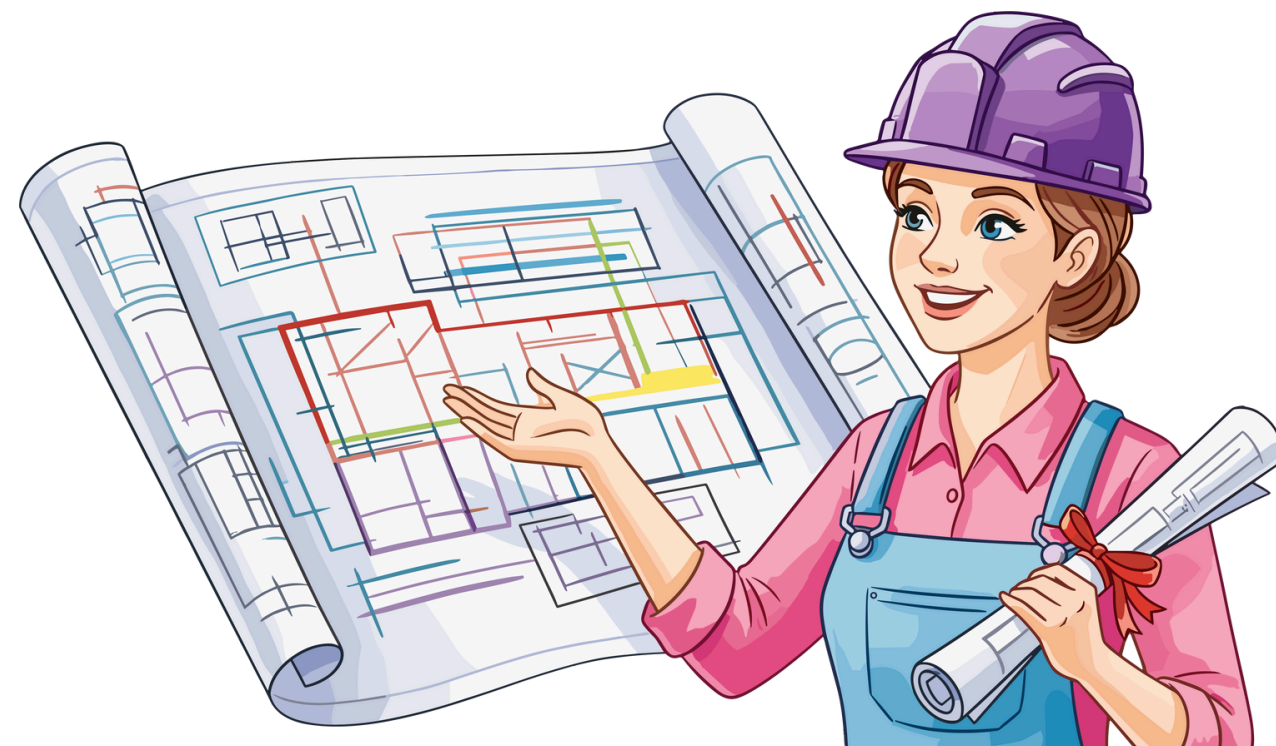
# Non-Government Projects Execution Model & Impact

## Employment Generation & Social Impact

- Minimum 100 local jobs per district Per states which will include mason, labour, carpenter, plumber, engineers architect electrician and various other professionals roles.
- Priority hiring from nearby villages, supporting workers with year-round employment

## Quality Assurance

24-month defect liability period ensuring long-term performance and accountability

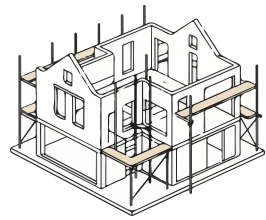


## Growth & Investment Focus

- Dedicated budget for marketing and digital app development
- Strategic plan to expand operations PAN-India through standardized systems and technology



# Problems in the Industry



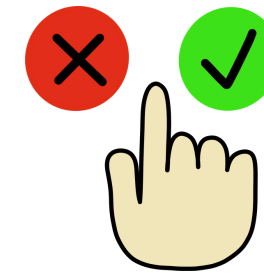
## **Non professional approach**

Over 90% of residential houses are built non-technically without proper material and specifications



## **single point solutions**

Fragmented execution due to lack of a single-window construction platform



## **Quality**

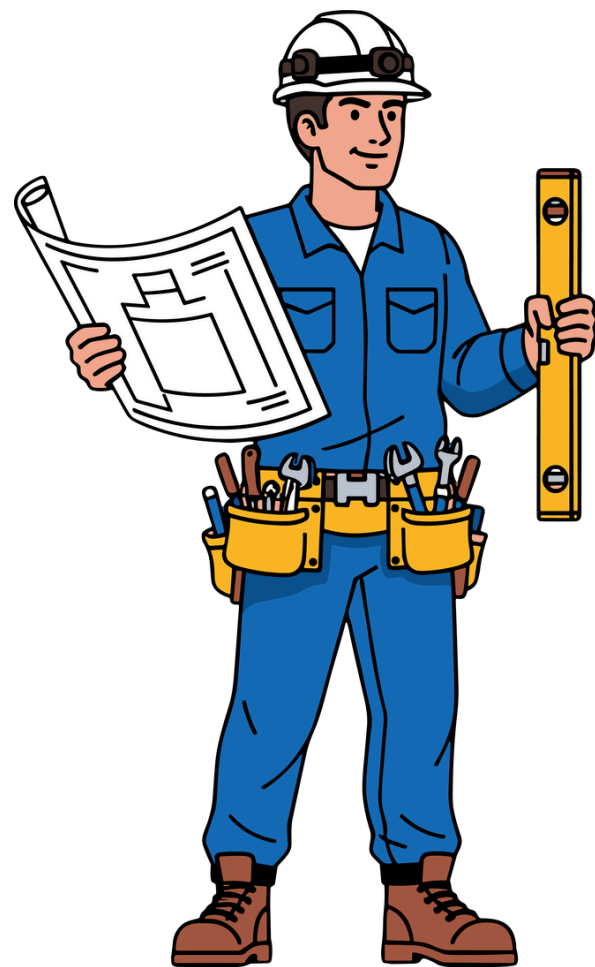
Local residents are not well versed with correct specifications of material.



# Our Solutions



SWYANISH SOLUTIONS PRIVATE LIMITED delivers end-to-end construction solutions for government and private clients, focused on quality execution, transparency, and timely delivery.



## **BOQ-Based Planning**

Detailed BOQ and cost forecasting ensure transparent pricing, controlled budgets, and reduced cost overruns.

## **End-to-End Project Delivery**

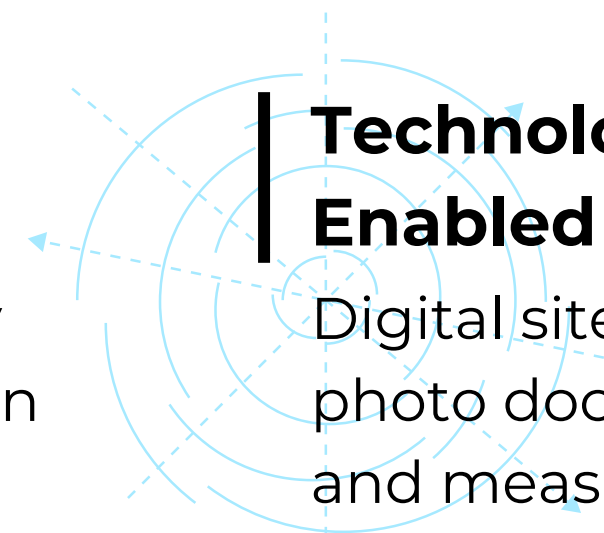
Single-point responsibility from planning to execution minimizes coordination gaps and project delays.

## **Quality-Driven Execution**

Stage-wise quality checks, certified materials, and adherence to IS codes ensure durable and compliant construction.

## **Technology-Enabled Monitoring**

Digital site records, photo documentation, and measurement tracking improve visibility and accountability.



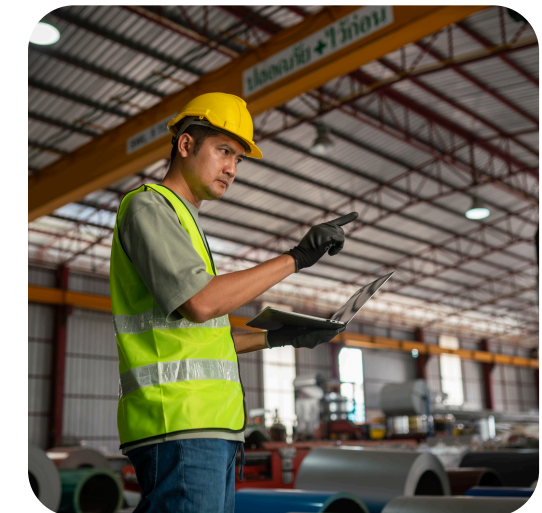


# | Offerings : Integrated Construction & Project Execution Solutions

We deliver reliable civil construction and project management solutions designed to ensure quality, safety, and timely completion for government and private building projects.

## Our Offering

- **Pre-Construction Planning** – Site assessment, layout planning, and BOQ-based cost estimation.
- **Design Coordination** – Structural drawings and basic 3D support for smooth execution.
- **Civil Construction** – RCC, masonry, plastering, flooring, and finishing works.
- **Government Project Execution** – BOQ-compliant construction with departmental billing.
- **Quality & Safety Control** – IS code compliance with certified materials and safety practices.
- **Digital Site Monitoring** – Transparent measurement, photo records, and progress tracking.





# Why to Choose Us

## Proven Execution

Strong experience in delivering government and private construction projects with consistent quality and timely completion.

## BOQ-Driven Transparency

Clear BOQ-based pricing and scope ensure cost control and zero hidden surprises.

## Reliable Government Compliance

Well-versed in departmental standards, approvals, measurements, and billing processes.

## Custom Solutions

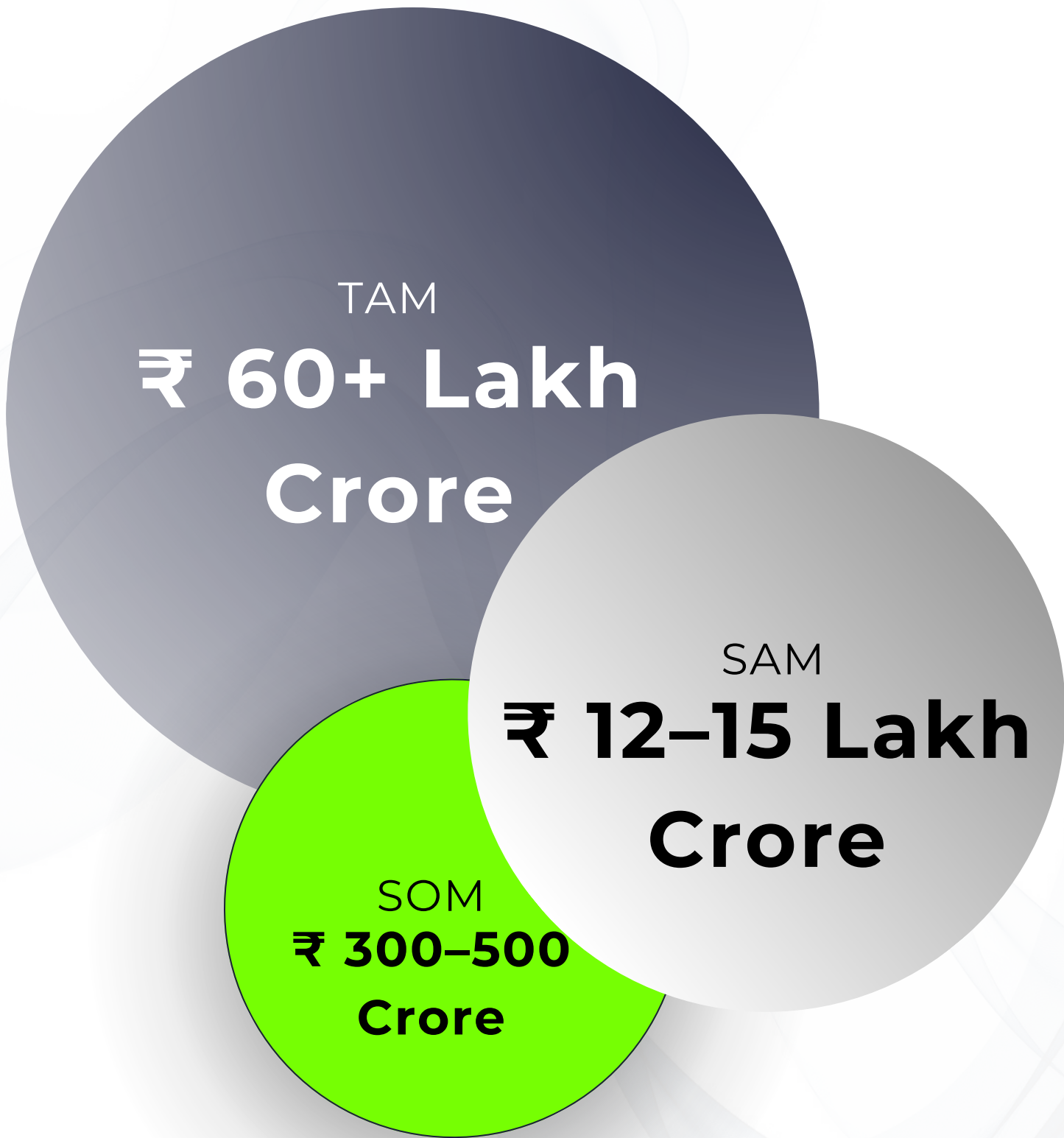
Tailored construction methods and execution plans based on site conditions and client needs.

## Aftercare Service

*Post-construction support and defect-liability assistance to ensure long-term performance and durability.*



# Market Potential



## Construction Opportunity in India

India’s construction sector is growing at 6–8% CAGR, driven by infrastructure spending, housing demand, and government capex.

## Strategic Focus

Swyanish focuses on government contracts and private building projects in central India, where demand for quality, BOQ-compliant execution is high.



# Target Market

## Segmentation

- **Geographic** : Madhya Pradesh and nearby regions across central India.
- **Demographic** : Government departments, private developers, institutions, and homeowners.
- **Behavioral** : Clients seeking reliable, BOQ-compliant, and quality-driven construction.
- **Needs-Based** : Demand for durable buildings, timely delivery, and cost transparency.

## Targeting

- **Primary** : Government departments and PSUs for building and institutional projects.
- **Secondary** : Private residential developers and individual home builders.
- **Tertiary** : Commercial clients including shops, offices, and mixed-use projects.

## Positioning

- **Value Proposition** : End-to-end, quality-focused construction with transparent execution.
- **Brand Message** : “Building Quality. Building Trust. Building Legacies.”
- **Competitive Edge** : Strong BOQ discipline, local presence, and owner-driven supervision.



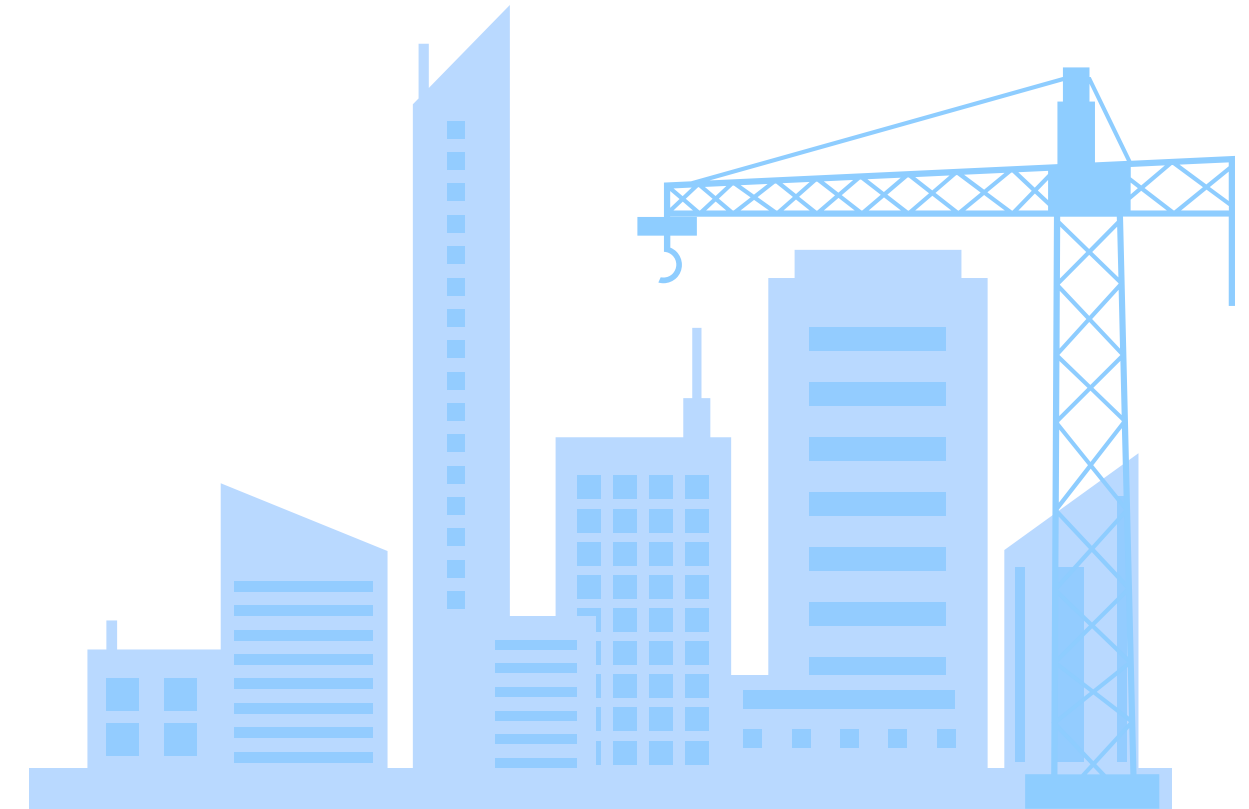
# Revenue Model: Multiple Streams, One Mission

## Primary Source

### Project Contracts

Core revenue comes from government and private construction contracts for residential, commercial, and institutional buildings secured through tenders and direct clients.

## Poential Source



**Maintenance & Defect Liability Contracts :** Post-construction maintenance and defect-liability services generate recurring income and long-term client relationships.

**Material Supply & Allied Works :** Additional revenue from supplying construction materials and undertaking add-on works during project execution.

# Go To Market Strategy

## Government & Public Sector Engagement:

Actively participate in government tenders and execute BOQ-based projects for public buildings and institutions.

## Private Sector Expansion :

Target individual home builders, private developers, and commercial clients for residential and mixed-use projects.

## Strategic Partnerships :

Collaborate with architects, consultants, material suppliers, and local engineers to strengthen execution capability and reach.

## Quality-Led Market Positioning :

Position Swyanish as a quality-driven, transparent, and reliable construction partner.

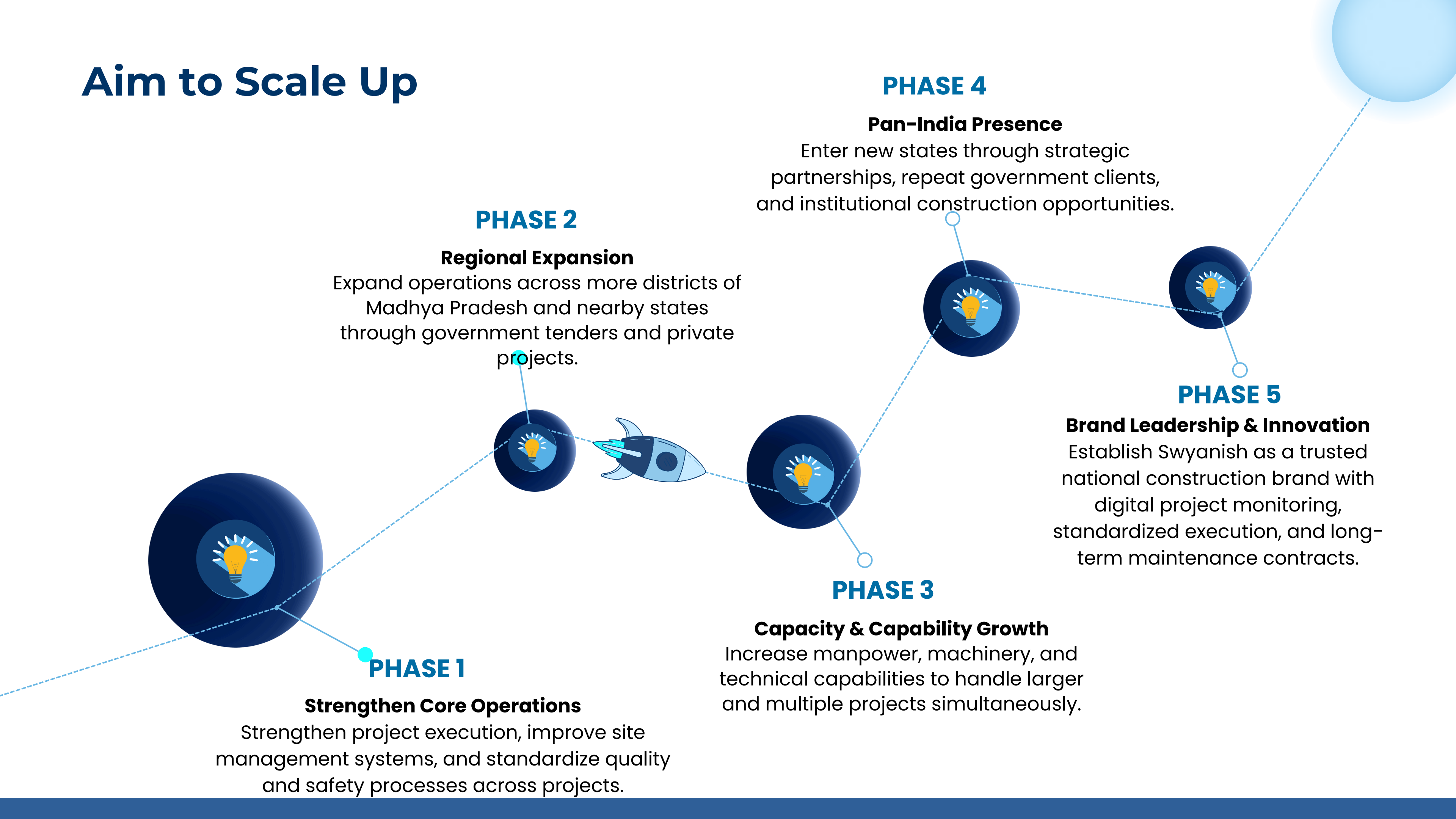


PHASE-2

PHASE-1

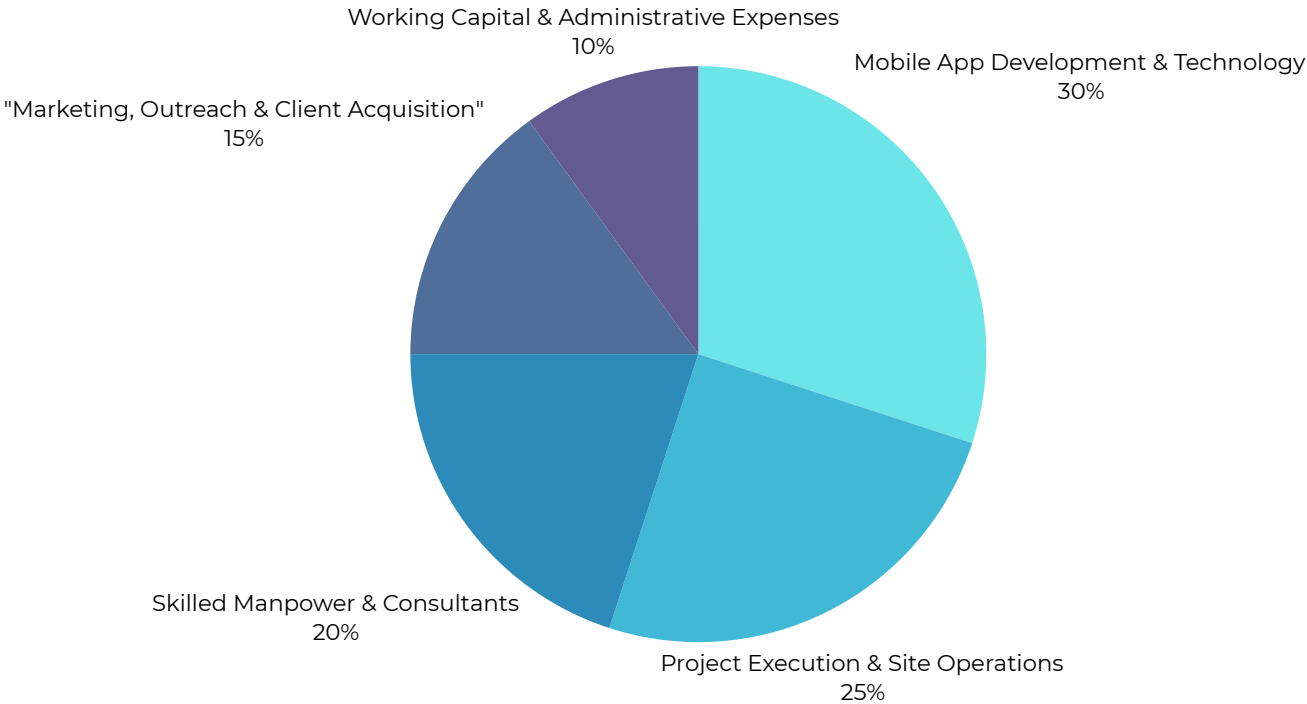


# Aim to Scale Up



# Fund Utilization

Use of Funds	% Allocation	Amount (₹ Lakhs)	Short Description
Mobile App Development & Technology	30%	6.0	Development of unified construction management app (planning, monitoring, reporting)
Project Execution & Site Operations	25%	5.0	Site setup, supervision, quality control, and execution support
Skilled Manpower & Consultants	20%	4.0	Engineers, supervisors, independent engineer & consultancy services
Marketing, Outreach & Client Acquisition	15%	3.0	Branding, outreach to govt & private clients, proposals and onboarding
Working Capital & Administrative Expenses	10%	2.0	Office operations, compliance, travel, and contingency
Total	100%	20.0	—





# Meet Our Visionaries



## Sweta Awanish Kumar

### Director

Sweta Awanish Kumar is a Director at SWYANISH SOLUTIONS PRIVATE LIMITED.

She plays a key role in strategic planning, compliance oversight, and organizational governance.

She supports business operations with a strong focus on transparency, quality standards, and sustainable growth.



## Somya Awanish Kumar

### Director

Somya Awanish Kumar is a Director at SWYANISH SOLUTIONS PRIVATE LIMITED, supporting strategy, compliance, and operational governance with a focus on transparency and quality execution.



# Get in Touch: Contact Information

*SWYANISH SOLUTIONS PRIVATE LIMITED is committed to delivering quality-driven, transparent, and reliable construction solutions for government and private clients.*

*We focus on timely execution, compliance, and long-term value creation in every project we undertake.*



+91 9755503798 / 9340363943



swyanish@gmail.com



AF H. NO. 05, JIYAMAAPURAM PHASE 2,  
TILI ROAD, Sagar,  
Madhya Pradesh-470002

